



TRIOBIKE



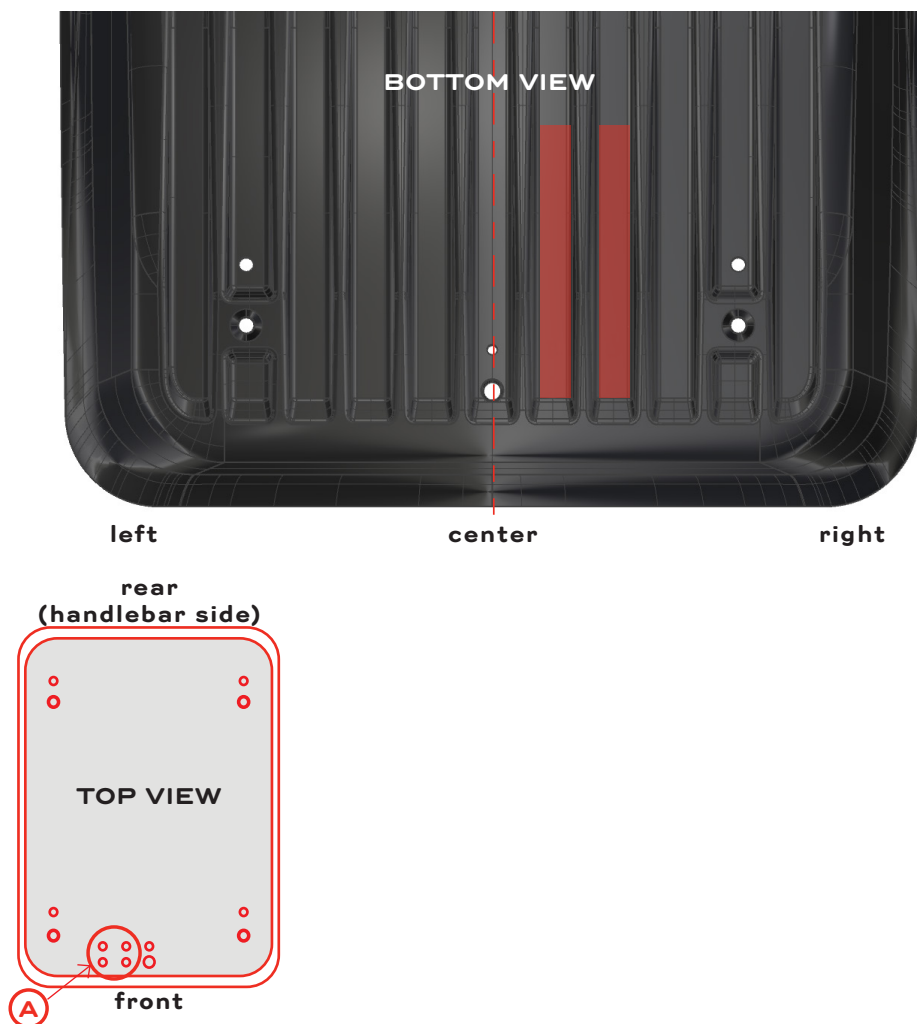
BOXTER

STEP-IN INSTALLATION MANUAL

ENGLISH V 1.1

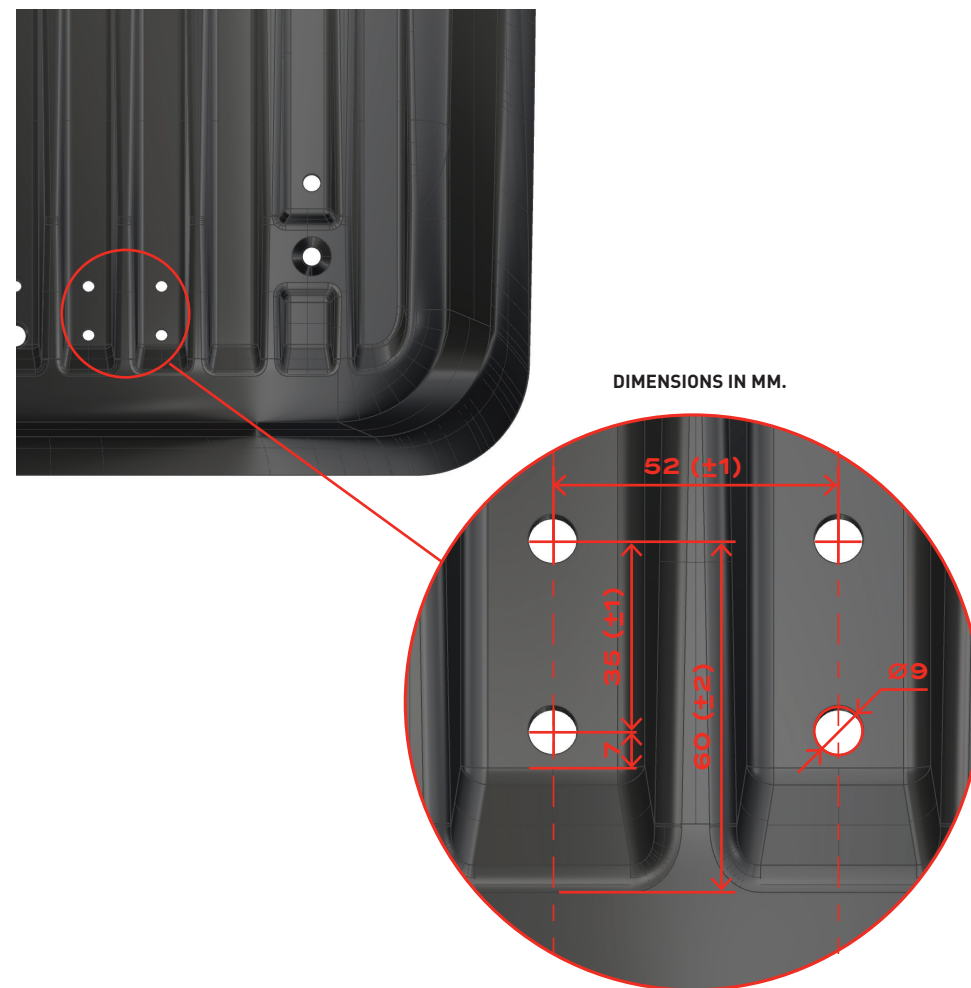


## INSTALLING THE STEP-IN



- 1- Check if your box has already the 4 holes for the step in (A): if so, skip to step 4
- 2- With the front box flipped upside down, on the right side identify the 2 gaps between the reinforcement fins (shown in red in the picture).

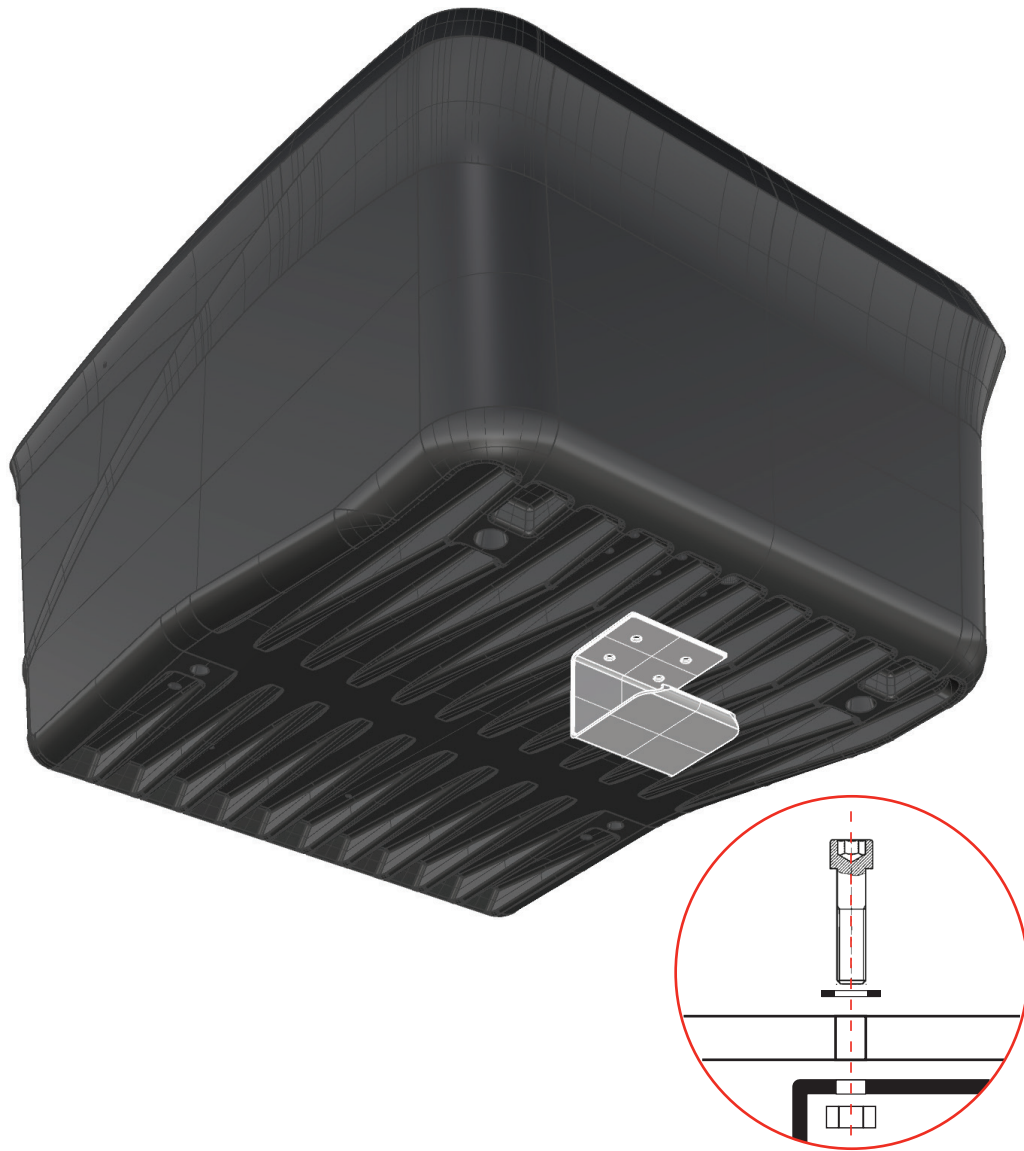
2



- 3- With a 9mm tip, drill 4 holes as shown in the picture. They have to stay in the middle of the flat part between the fins.

3

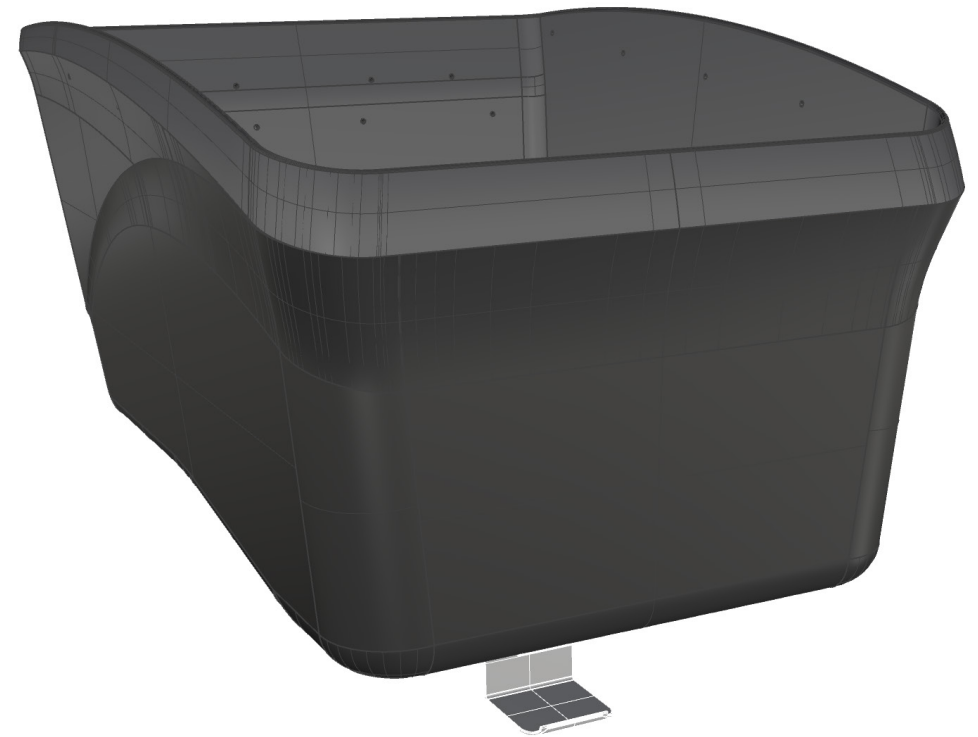
## INSTALLING THE STEP-IN



**3-** Connect the step in to the box using 2x DIN912 M6x40 bolt on the front and 2x DIN912 M6x45 on the rear. Put washers between the bolt head and box floor.

**4**

## INSTALLING THE STEP-IN



**4-** Test the step in putting your foot on it. It should not shake or make noise.

**5**



TRIOBIKE

TRIOBIKE A/S

Vesterbrogade 149, 1620 Copenhagen V - Denmark

phone: +45 3670 0070

[info@triobike.dk](mailto:info@triobike.dk) | [www.triobike.com](http://www.triobike.com)